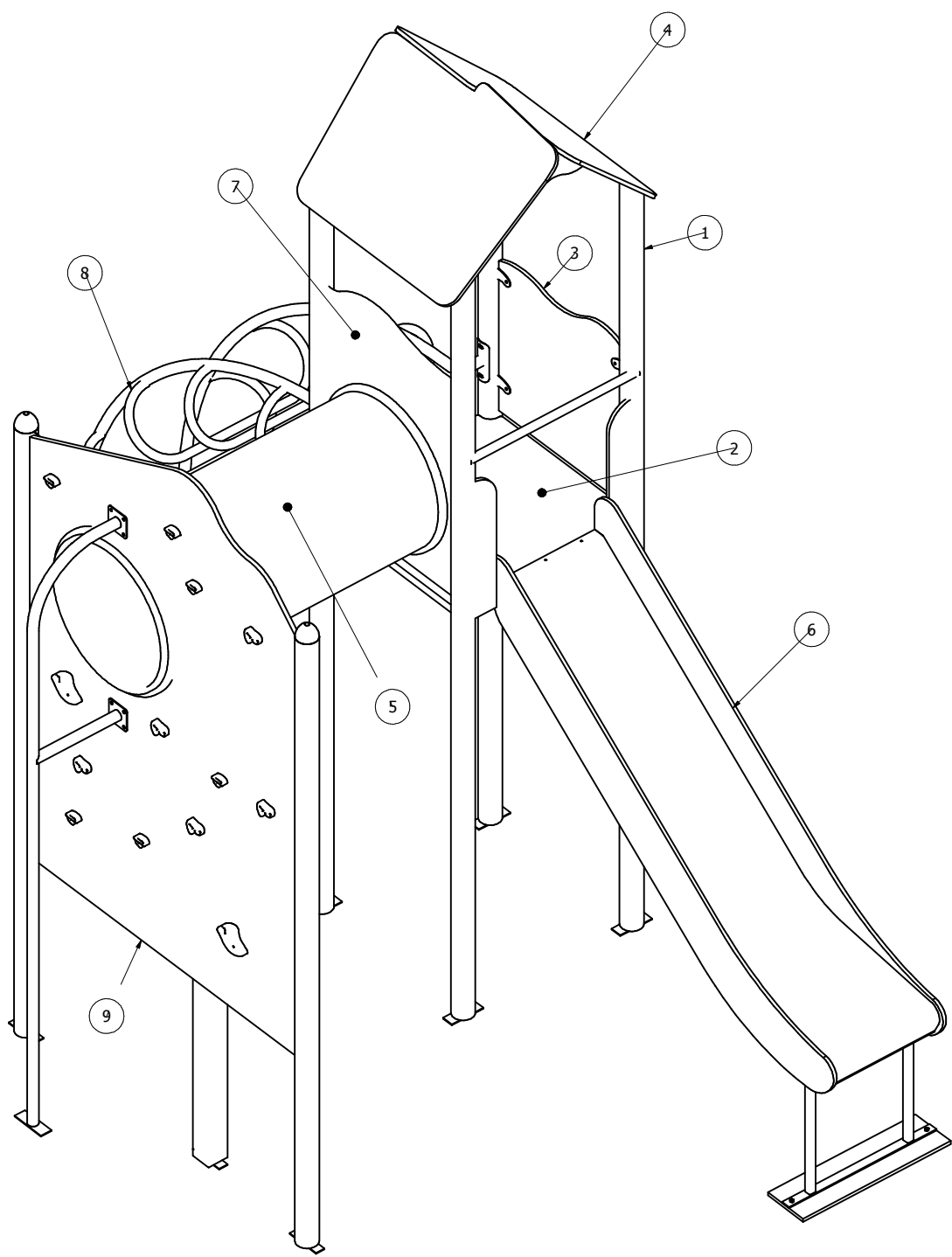
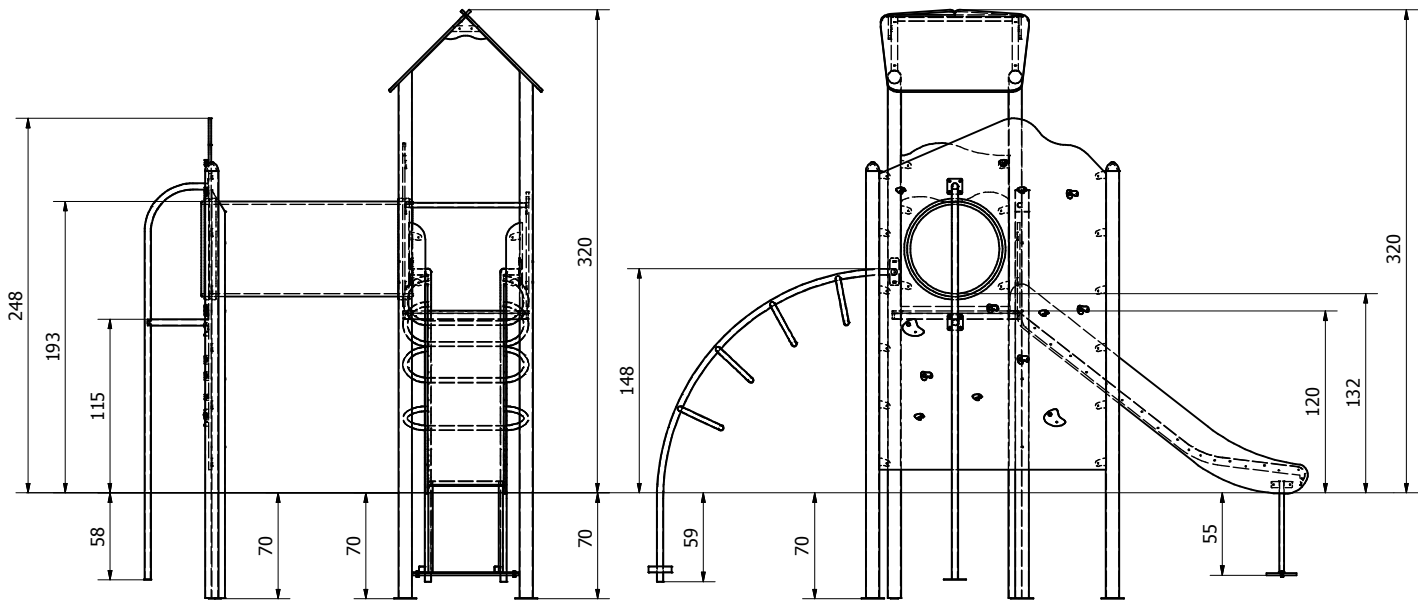


Documentation of instalation and exploitation product nr 1003 - Traverse

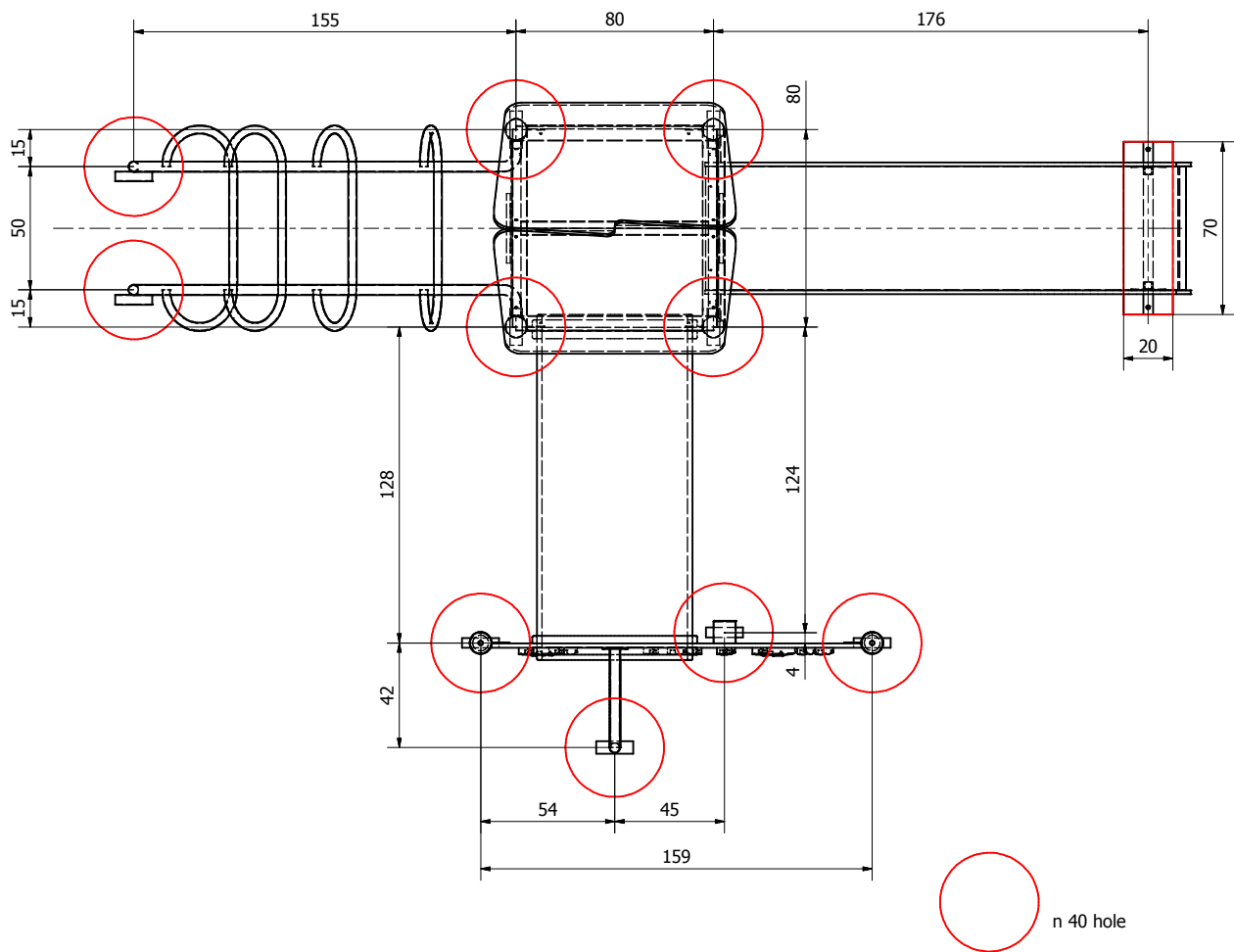


LPARTS LIST		
ELEMENT	QUANTITY	PART NR
1	1	1003 Tower
2	1	Square platform
3	1	Side wall
4	2	Roof tract
5	1	Tube
6	1	SL120 PE Slider
7	1	Tube cover
8	2	H120 Arc Ladder
9	1	Climbing module

Anchoring depth designation



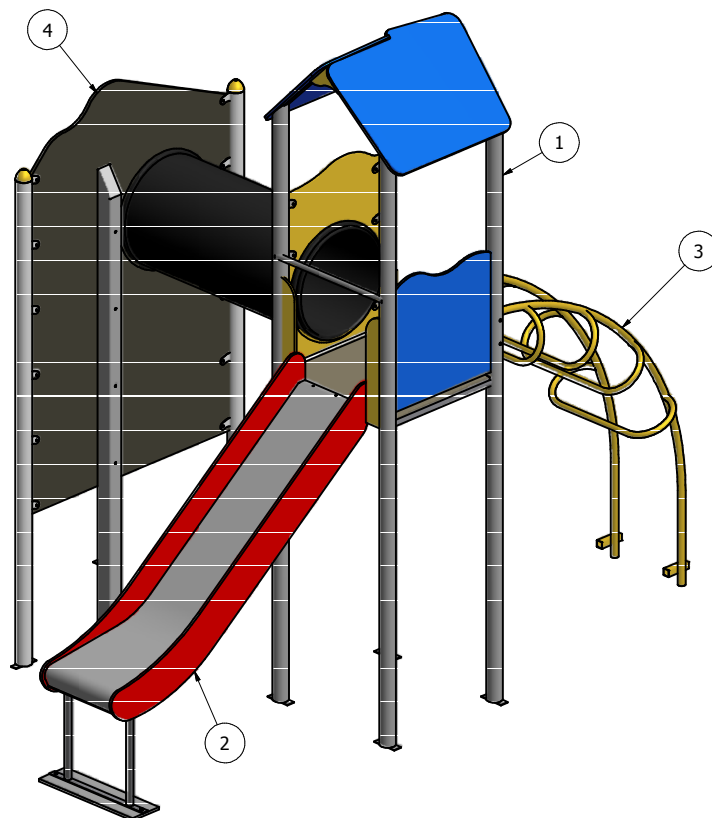
Foundations placement



#### Assembly order

- 1) Tower assembly
- 2) SL120 slider assembly
- 3) Arc ladder assembly
- 4) Climbing module with tube assembly

During instalation it is necessary to provide assembly space corresponding to device safety area



#### Caution

During assembly pay special attention to:

- 1) Proper vertical tower setting.
- 2) Tightening all screws and mountings.
- 3) Securing and marking assembly place.

Before handling this device to use you must check stability of all of the parts, remove securing tapes, check level and condition of fall amortization surface..

## Safety area designation

